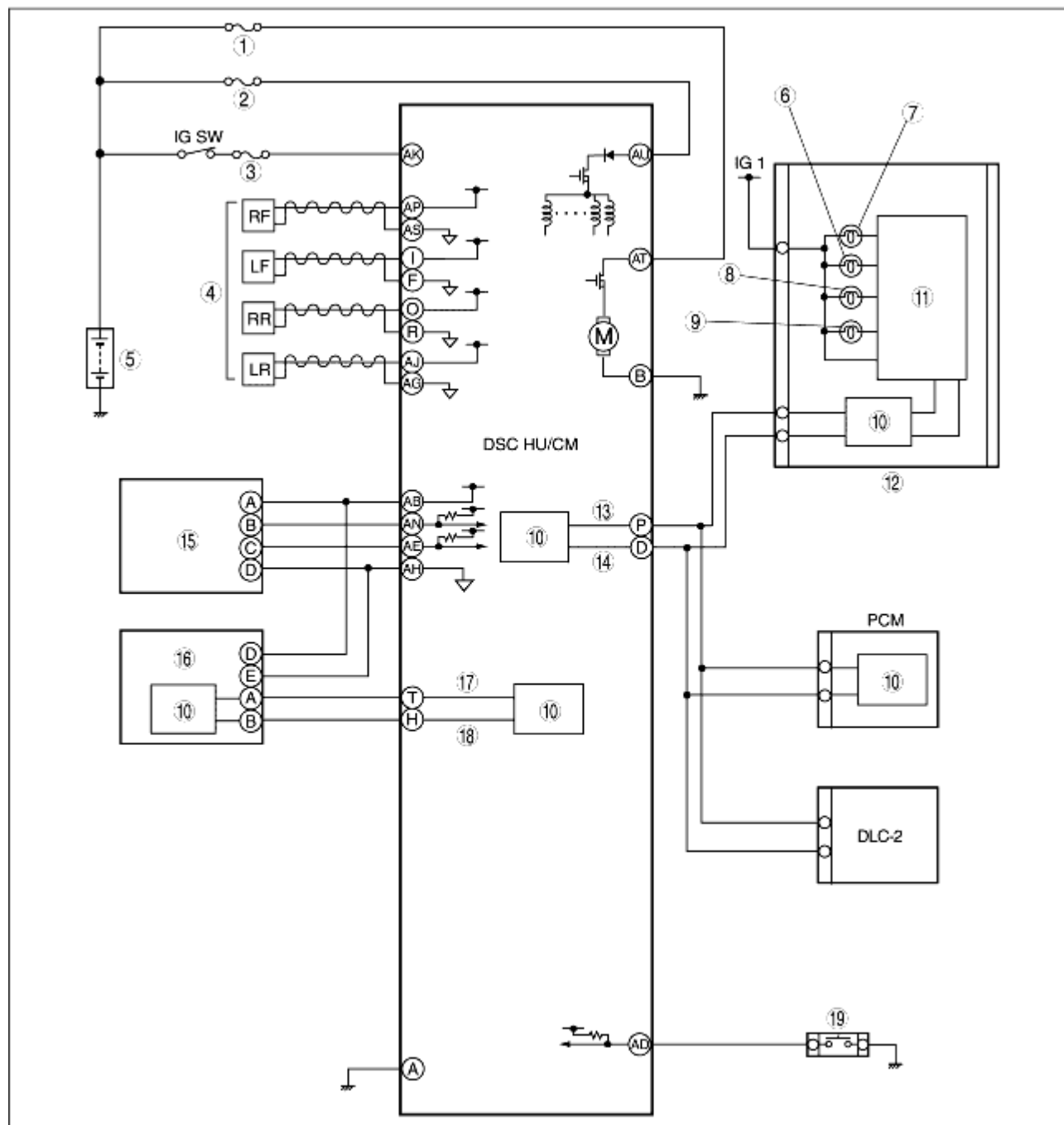


# DYNAMIC STABILITY CONTROL (DSC) SYSTEM WIRING DIAGRAM

B3E041543000T04



B3E04 15T 102

|   |                        |
|---|------------------------|
| 1 | ABS 1 30A fuse         |
| 2 | ABS 2 20A fuse         |
| 3 | ABS IG 10A fuse        |
| 4 | ABS wheel-speed sensor |

|    |                            |
|----|----------------------------|
| 5  | Battery                    |
| 6  | Brake system warning light |
| 7  | ABS warning light          |
| 8  | DSC OFF light              |
| 9  | DSC indicator light        |
| 10 | CAN driver                 |
| 11 | Microcomputer              |
| 12 | Instrument cluster         |
| 13 | CAN_H                      |
| 14 | CAN_L                      |
| 15 | Steering angle sensor      |
| 16 | Combined sensor            |
| 17 | CAN2_L                     |
| 18 | CAN2_H                     |
| 19 | DSC OFF switch             |